

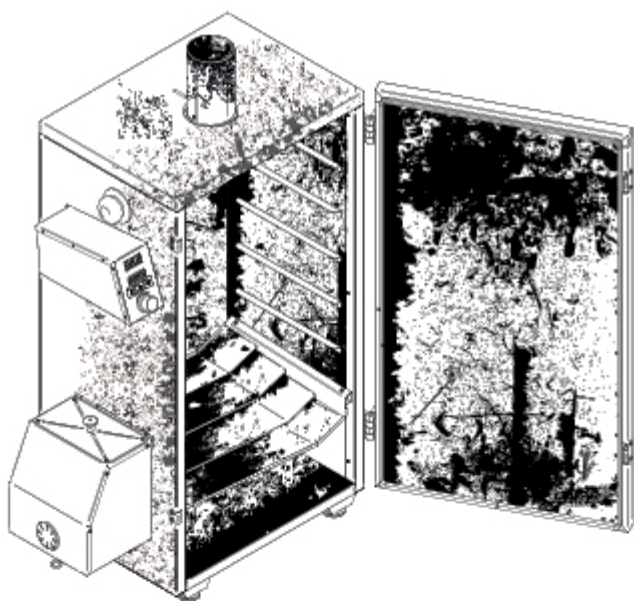
Golden Rules for Safe Smoker Operation



adres: ul. Aleja Niepodległości 41,
78-449 Borne Sulinowo, Polska
NIP PL 8992343025
TEL (+48) 94 373 00 02
info@borniak.com
www.borniak.com

Before use read the manual!

Your smoker is a powerful tool – but only if you know how to use it safely. The user manual isn't just paperwork. It shows you how to avoid damage, prevent fires, and get the best results from every session. It's your first and most important ingredient.



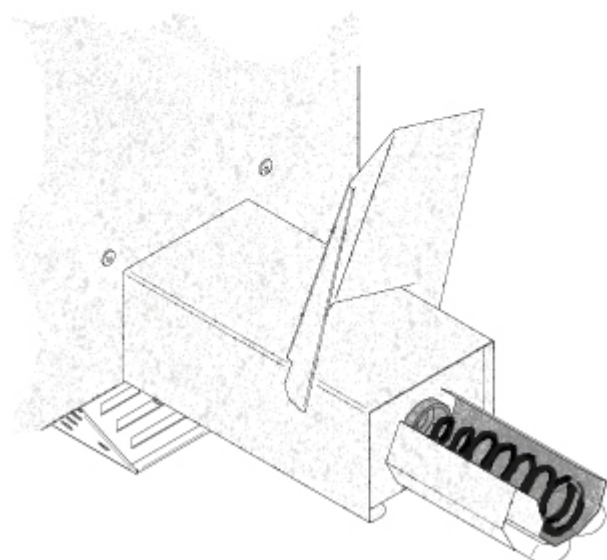
1.

**Always use dry smoke chips!
Do not use the smoker indoors.
Protect the smoker from
rain and moisture.**

2.

Clean the Smoker Regularly!
(Avoid fires and food contamination!)

For more detailed information, please refer to Chapter **VIII** page **10/13** of the user manual.



3.

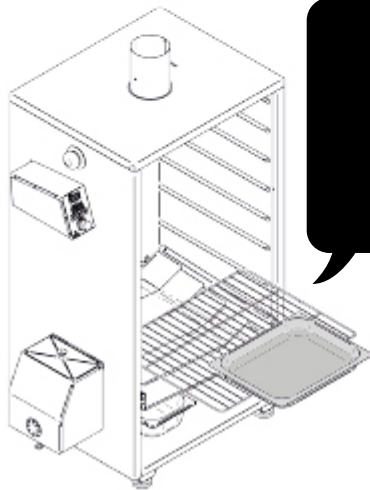
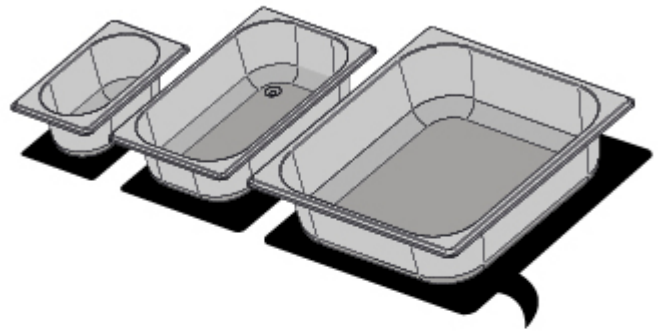
**Clean the smoke generator
COIL regularly!**

(Prevent tar buildup and keep the smoke flowing!)

For detailed guidance, see Chapter **VIII** page **10/13** of the user manual.

Choosing the Right GN Pan – Size and Function Inside the Unit.

Never place any GN Pans or trays under the heater.



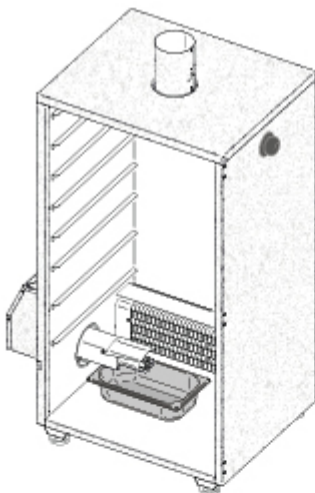
GN 1/2

large size

4.

Separate Dripping Fat from the Heat Zone. But leave space for air flow.

Place the GN 1/2 tray below the food to catch dripping fat before it reaches hot parts or ashes. See: Chapter VII, page 9/13 of the user manual. Chapter **VII**, page **9/13** of the user manual.



GN 1/4

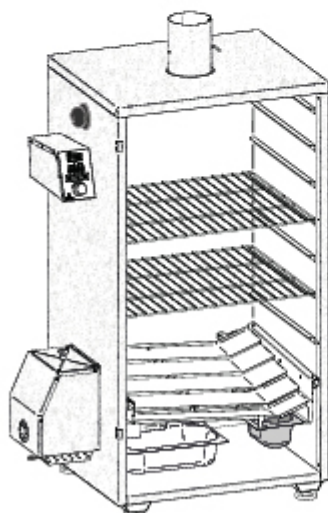
medium size

5.

Use the Correct Drip Pan!

(Avoid shallow trays – prevent spills!)

For more detailed information, please refer to Chapter **IV** page **5/13** of the user manual.



GN 1/9

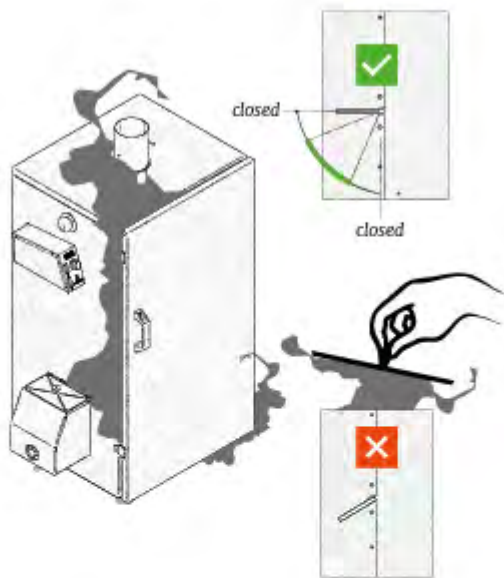
small size

6.

Separate glow from grease!

(Prevent grease ignition!)

For more detailed information, please refer to Chapter **I** page **3/13** of the user manual.



7.

Keep Chimney Valve Open!

(Prevent dangerous heat buildup! Risk of fire and damage to the smoker's system.)

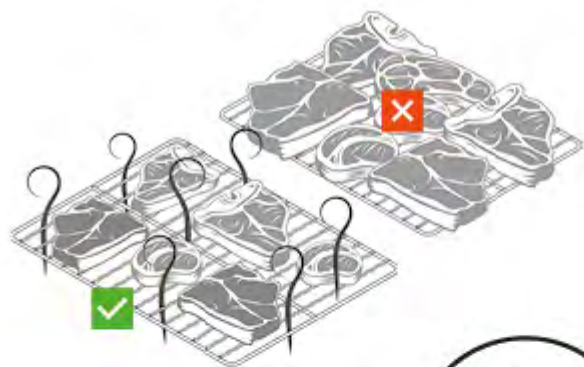
For more detailed information, please refer to Chapter **IV** page **5/13** of the user manual.

8.

Never Cover Grates with Aluminum Foil or other materials!

(Avoid overheating and cable damage!)

For more detailed information, please refer to Chapter **I** page **3/13** of the user manual.



9.

Don't Block the Grate Surface!

(Ensure smooth airflow! It supports the smoking process and helps prevent fire risk.)

For more detailed information, please refer to Chapter **I** page **3/13** of the user manual.

10.

Never Cover the Temperature Sensor!

(Free airflow around the temp sensor ensures even temperature distribution. Supports the smoking process)

For more detailed information, please refer to Chapter **I** page **3/13** of the user manual.

